



SHEFFIELD • ENGLAND

Razor sharp since 1910

Durham Duplex
312-314 Petre St
Sheffield
S4 8LT, UK

tel: +44(0)114 251 8468

fax: +44(0)114 256 2209

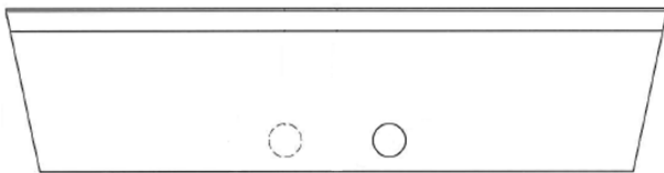
email: export@durham-duplex.co.uk

Pelletizer & Shredder Blades for Recycling Plastic

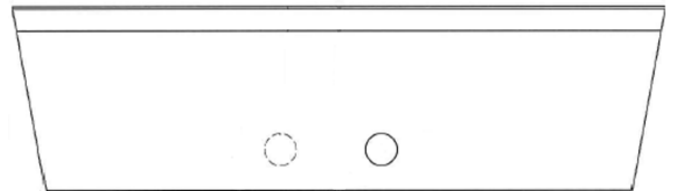
Durham-Duplex manufactures and supplies a comprehensive range of punches, straight, circular and serrated/toothed machine knives, made from carbon, stainless, alloy, high speed and powder steels to fulfil the modern factories requirements in almost every industrial sector. Here are some of our standard items used in the recycling of plastics. If you can't see what you're looking for please ask.

Erema type shredders

2ST1 03EF 002
127 x 31 x 3mm
5 x 1.22 x 0.118"

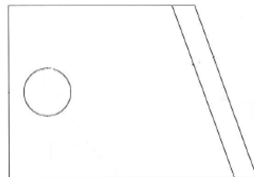


2ST1 03ED 002
130 x 36 x 3mm
5.12 x 1.42 x 0.118"

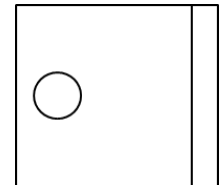


Erema type side knives

2ST1 03EF 007
40 x 48 x 4mm
1.57 x 1.89 x 0.157"



2ST1 03EF 006
40 x 43 x 4mm
1.57 x 1.69 x 0.157"

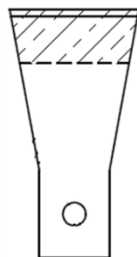


Edge-hardened Erema type pelletizers

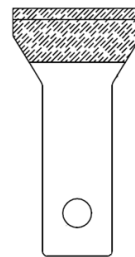
Straight



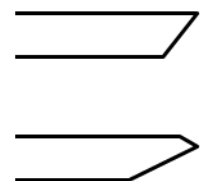
Flared



Y- shape



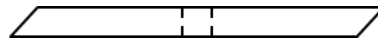
different edge profiles including:



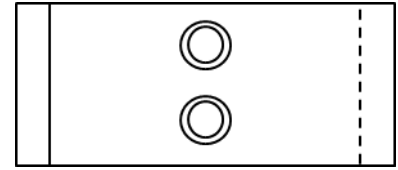
Durham Duplex Pelletizer & Shredder Blades for Recycling Plastic

Gala Type Pelletizers

05-01661
8.1 x 40.6 x 4mm
0.32 x 1.60 x 0.157"

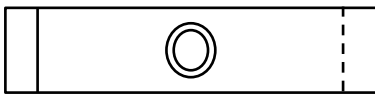


05-06648
20.6 x 40.6 x 3.55mm
0.81 x 1.60 x 0.14"

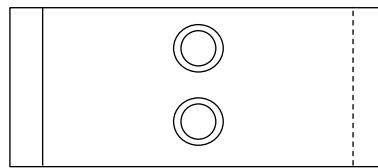


BKG Type Pelletizers

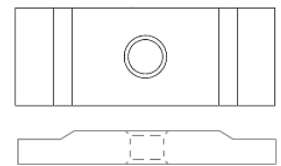
05-11091
12 x 46 x 4mm
0.47 x 1.81 x 0.157"



05-11090
22 x 46 x 4mm
0.87x 1.81 x 0.157"

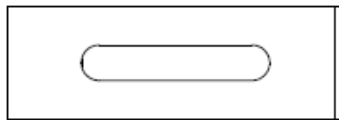


05-14882
12 x 22 x 4/3mm
0.47 x 0.87 x 0.157/0.14"



Munchy Type Pelletizers

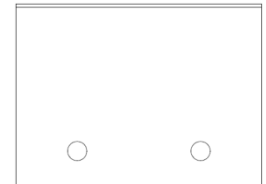
B590 001 D01
19 x 57 x 0.38
0.75 x 2.25 x 0.015"



B590 005 D01
38 x 57 x 0.4mm
1.5 x 2.25 x 0.016"



01-12685
76 x 57 x 0.5mm
3 x 2.25 x 0.02"



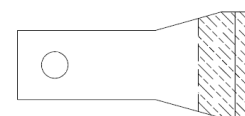
Berenger Type Pelletizer

05-03535
35 x 83.5 x 0.8mm
1.38 x 3.29 x 0.03"



NGR Type Pelletizer

2ST1 XD 1274
20/13 x 44 x 1mm
0.79/0.51 x 1.73 x 0.04



Don't forget to ask us about granulator blades, shredder teeth, shear blades or any other knives or blades used in your plant!